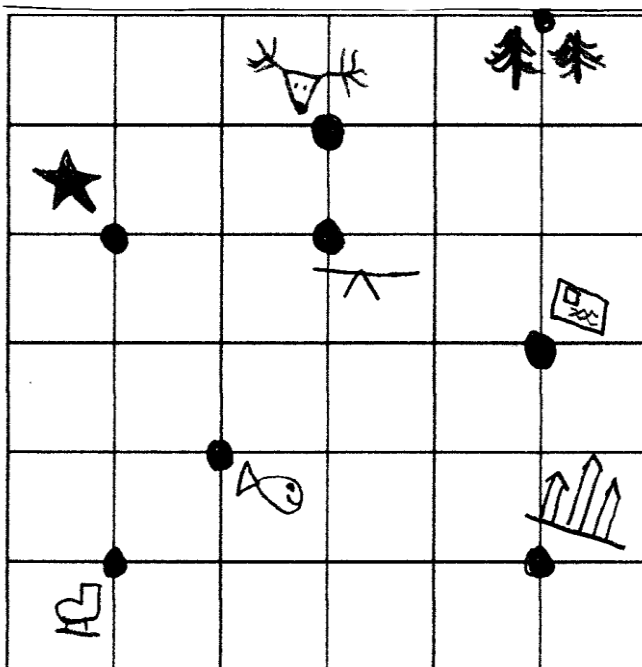







This compass rose will help you navigate the city. Use a crayon to mark the path Tommy traveled on his adventure. Don't forget to use the key!

1. Circle the forest. This is your starting position.
2. Travel five lines to the south. Where are you? \_\_\_\_\_
3. Travel four lines to the east.
4. Go three lines north. You are standing at the \_\_\_\_\_
5. Travel two lines west.
6. Go one line north. Where did you end up? \_\_\_\_\_



**Key**

-  Forest
-  Santa's Sleigh
-  Ice Rink
-  Rockefeller Center
-  Church
-  Post Office
-  Pet Store
-  Park